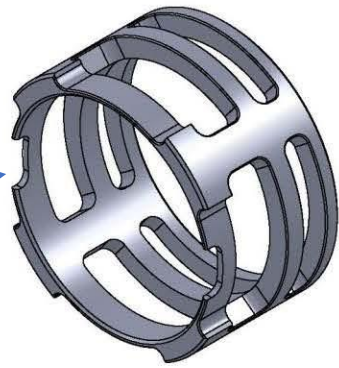


SS-SUPPORT 5.4"-ASSY

HEIGHT: 5.4"
CONFIG: J

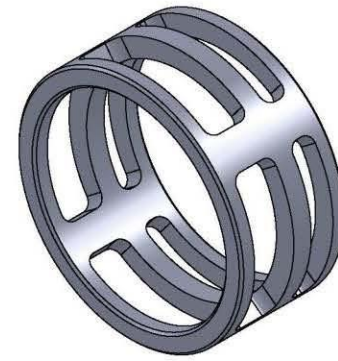
Std Can - Meg15/Tiburón - 5.5lb Radial/Axial
Tall Can - Meg15/Tiburón - 8lb Radial



SS-SUPPORT STANDARD 3.4"-MP

HEIGHT: 3.4"
CONFIG: S

Std Can - 2.7 - 5.5lb Radial/Axial
Cave Can - Meg15/Tiburón - 5.5lb Radial/Axial
Tall Can - 2.7 - 8lb Radial



SS-SUPPORT 3.0"-MP

HEIGHT: 3.0"
CONFIG: C

Mini Can - Meg15/Tiburón - 4lb Radial/Axial



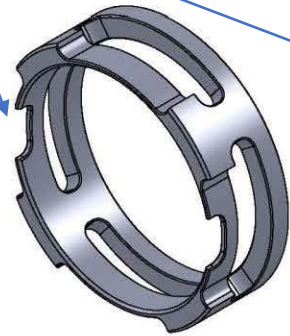
SS-SUPPORT 2.0"-MP

HEIGHT: 2.0"
CONFIG: I

Std Can - Meg15/Tiburón - 5.5lb Radial/Axial

NOTE:
Axial Scrubbers need the cut aways on the top of the support.

Radial scrubbers do not but can use a support designed for the Axial as long as it is the appropriate size for your configuration



SS-SUPPORT MINI/AXIAL 1.88" LEGACY-MP

HEIGHT: 1.88"
CONFIG: J

Mini Can - 2.7 - 4lb Radial/Axial



SS-SUPPORT CAVE/AXIAL 1.4" LEGACY-MP

HEIGHT: 1.4"
CONFIG: C

Cave Can - 2.7 - 5.5lb Radial/Axial
Mini Can - Meg15/Tiburón - 5.5lb Radial/Axial



SS-SUPPORT 1.4"-MP

HEIGHT: 1.4"
CONFIG: C

Cave Can - 2.7 - 5.5lb Radial
Mini Can - Meg15/Tiburón - 5.5lb Radial



SS-SUPPORT MINI/RADIAL 1" LEGACY-MP

HEIGHT: 1.0"
CONFIG: I

Mini Can 2.7 4lb Radial/Axial